

HARRIMAN

AUBURN PORTLAND PORTSMOUTH BOSTON

DOVER SCHOOL DISTRICT ALTERNATIVE SCHOOL VESTIBULE SECURITY RENOVATION

DOVER, NEW HAMPSHIRE

Harriman Project No. 18359

Key Plan

Proj North



LEGEND

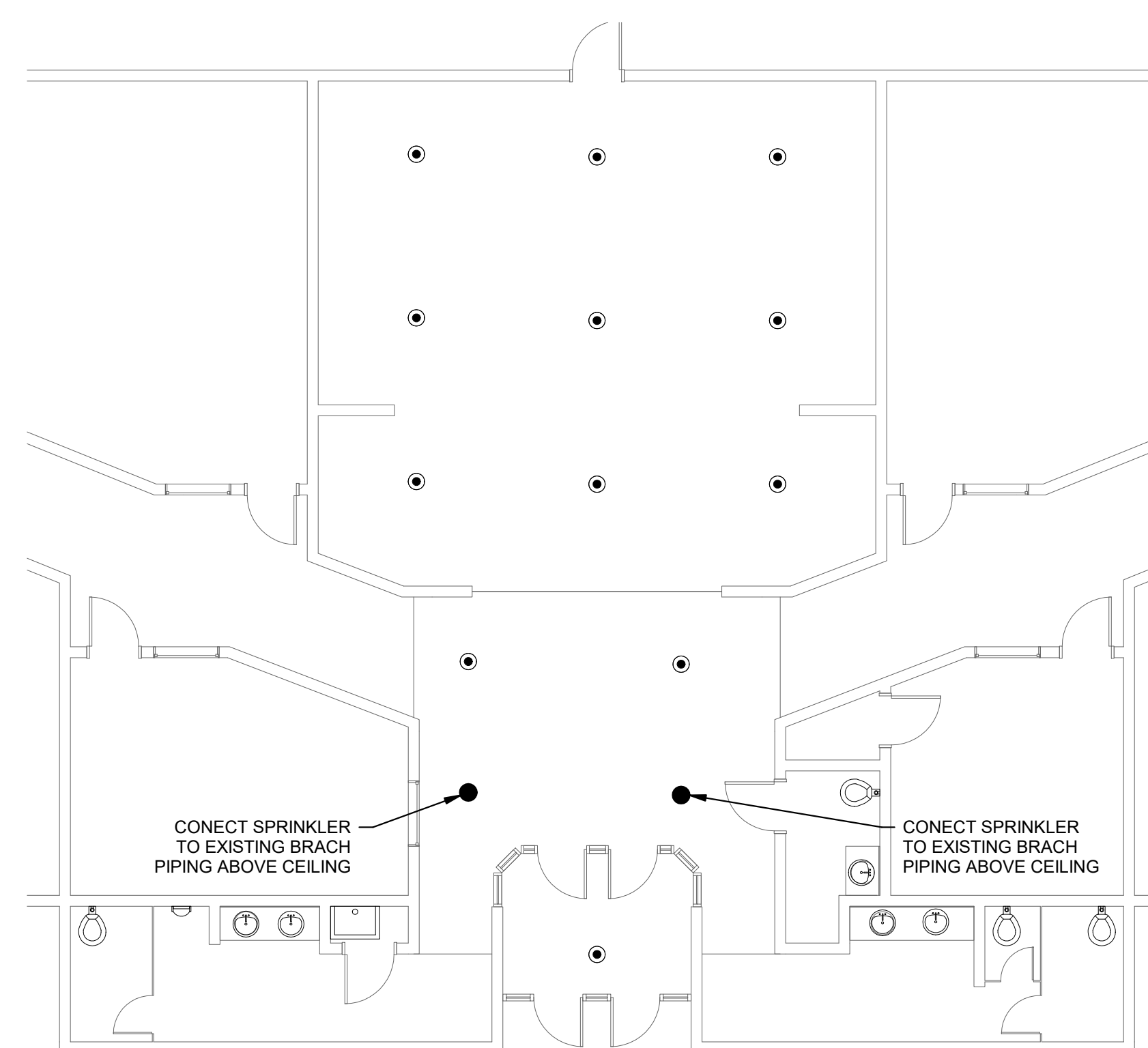
----	DEMOLISHED SPRINKLER PIPING ABOVE FINISHED FLOOR	□	CAP
—XF—	EXISTING SPRINKLER PIPING ABOVE FINISHED FLOOR	DN	DOWN
—F—	SPRINKLER PIPING ABOVE FINISHED FLOOR	AFF	ABOVE FINISHED FLOOR
●	SEMI RECESSED WET SPRINKLER	BFF	BELOW FINISHED FLOOR
⊙	EXISTING SEMI RECESSED WET SPRINKLER	TYP.	TYPICAL

FIRE PROTECTION NOTES

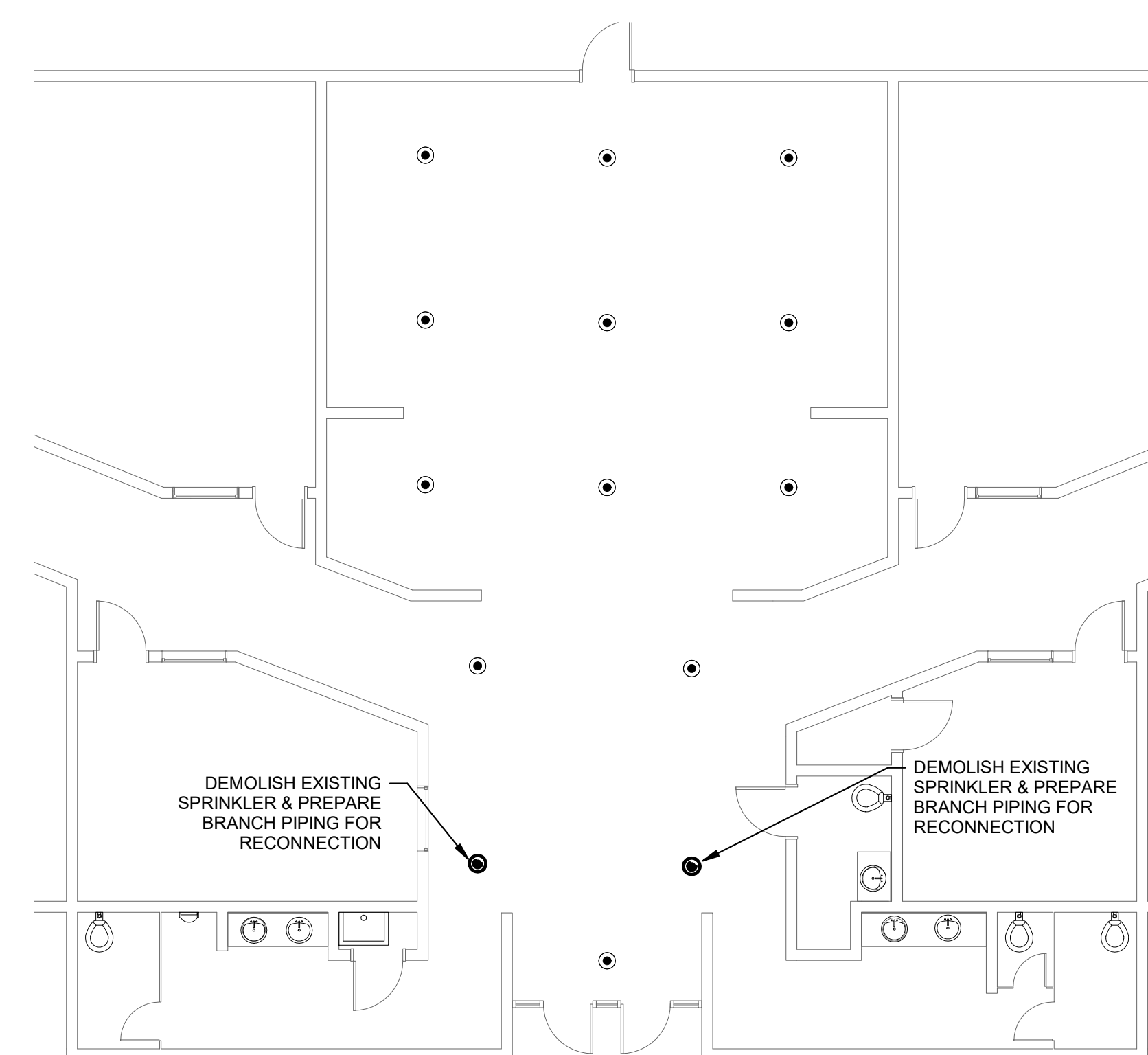
1. SPRINKLERS & PIPING SHALL BE PROVIDED WITHIN THE BUILDING IN ACCORDANCE WITH NFPA 13.
2. PROVIDE SPRINKLER PROTECTION BELOW DUCTS OR OTHER OBSTRUCTIONS 48" WIDE OR WIDER PER NFPA 13, OR AT ANY OTHER LOCATION WHERE SPRINKLER DISCHARGE IS OBSTRUCTED.
3. THE FIRE SPRINKLER CONTRACTOR SHALL THOROUGHLY REVIEW ALL CONTRACT DRAWINGS AND SPECIFICATIONS THAT IMPACT THE FIRE SPRINKLER SYSTEMS PRIOR TO BID. ANY QUESTIONS THAT AFFECT THE DESIGN AND INSTALLATION OF THE FIRE SPRINKLER SYSTEM SHALL BE RESOLVED BEFORE CONTRACT IS AWARDED.
4. SPRINKLER CONTRACTOR SHALL PREPARE AND SUBMIT SHOP DRAWINGS AS REQUIRED BY THE SPECIFICATIONS.

SPECIFICATIONS

FIRE PROTECTION MODIFICATIONS AND ADDITIONS TO THE EXISTING WET PIPE SPRINKLER SYSTEM SHALL BE PERFORMED BY A LICENSED FIRE PROTECTION CONTRACTOR. THE SPRINKLER SYSTEM SHALL BE INSTALLED PER THE 2016 EDITION OF NFPA 13. MODIFY THE EXISTING SYSTEM TO COMPLY WITH NFPA 13 WITHIN THE AREA OF WORK. ADDITIONAL SPRINKLERS REQUIRED FOR ADEQUATE COVERAGE SHALL MATCH THE EXISTING SPRINKLERS. SPRINKLER REQUIRING RELOCATION SHALL BE REPLACED WITH NEW SPRINKLERS. ALL PIPING SHALL BE SCHEDULE 40 BLACK STEEL PIPE AND FITTINGS. PERFORM FLOW CALCULATIONS WHERE SPRINKLERS ARE ADDED TO THE SYSTEM. PROVIDE SHOP DRAWINGS, SUBMITTAL SHEETS AND CALCULATIONS WHERE SPRINKLERS ARE ADDED TO THE SYSTEM.



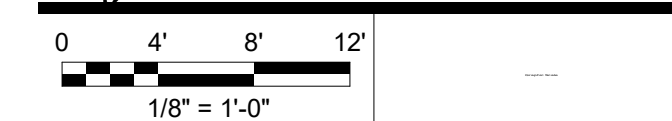
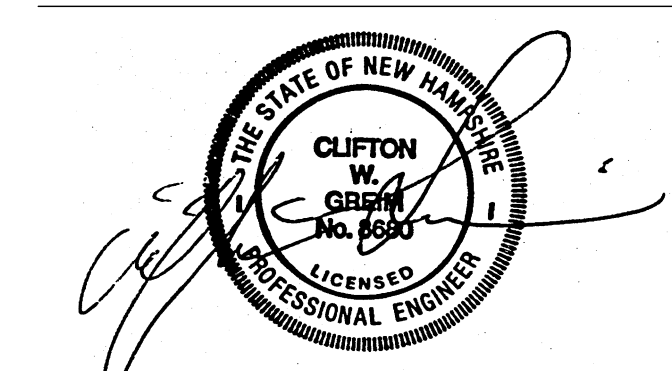
2 FIRE PROTECTION
SCALE: 1/8" = 1'-0"



1 DEMOLITION FIRE PROTECTION
SCALE: 1/8" = 1'-0"

Issues and Revisions

Date	Description
06-07-18	CONSTRUCTION DOCUMENTS



PA / PE: CG
Drawn By: MAM

© 2018
Harriman Associates

LEGEND, NOTES & FIRE PROTECTION PLANS

F10.1