

HARRIMAN

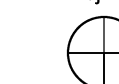
AUBURN PORTLAND PORTSMOUTH BOSTON

DOVER SCHOOL DISTRICT  
ALTERNATIVE SCHOOL  
VESTIBULE SECURITY  
RENOVATION

DOVER, NEW HAMPSHIRE

Harriman Project No. 18359

Key Plan Proj North



Issues and Revisions

Date	Description
06-07-18	CONSTRUCTION DOCUMENTS



PA / PE: JWT

© 2018  
Harriman Associates

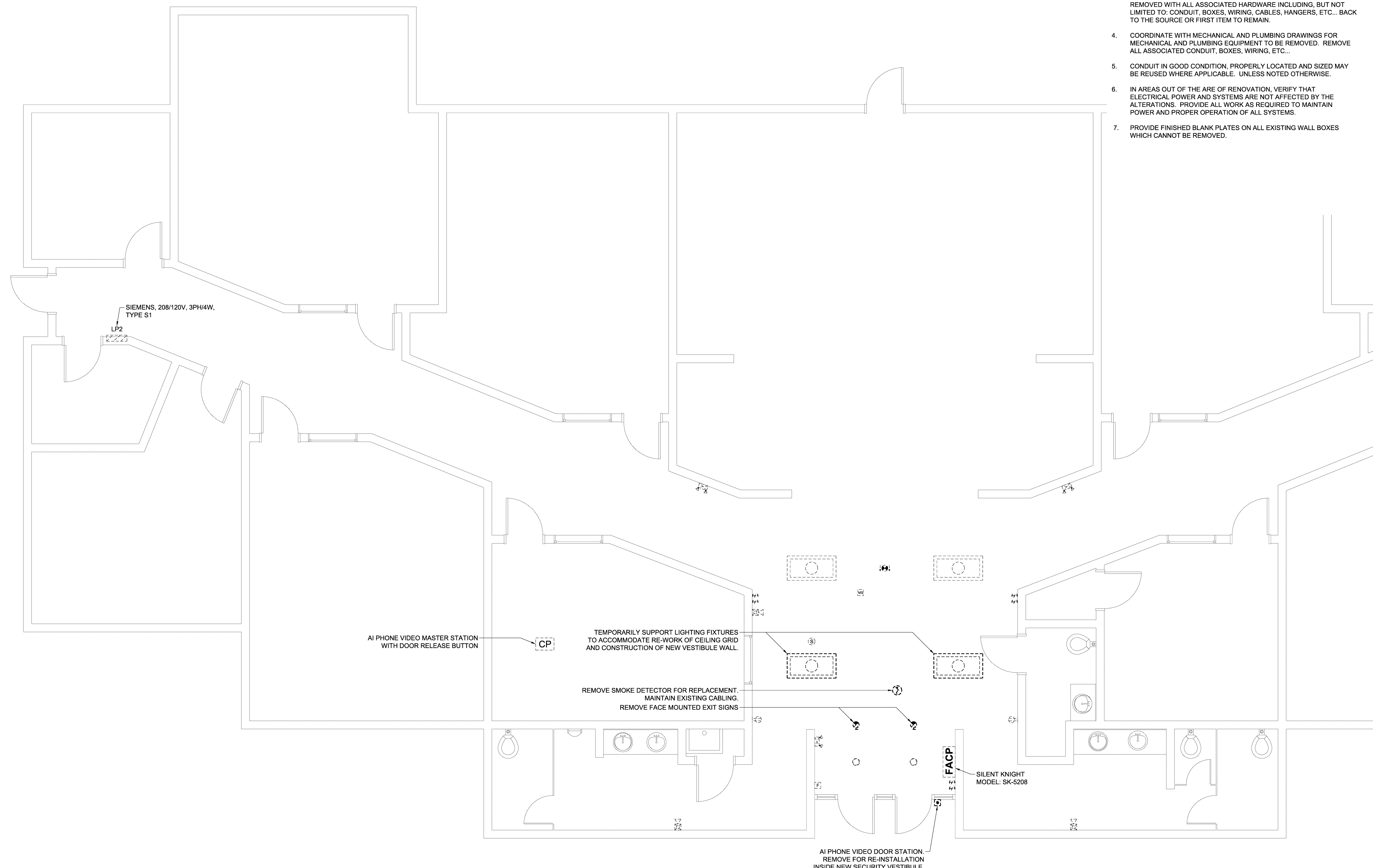
Drawn By: JMB

EXISTING CONDITIONS/  
DEMOLITION  
PART PLAN

E05.1

EXISTING CONDITIONS NOTES:

1. THE INTENT OF THE EXISTING CONDITIONS PLANS IS TO DOCUMENT EXISTING CONDITIONS. HOWEVER, ALL ELECTRICAL DEVICES MAY NOT NECESSARILY BE INDICATED ON THE DRAWINGS. FIELD VERIFY AND ADJUST WORK TO SUIT ALL FOUND.
2. REFER TO ALL ELECTRICAL PLANS TO DETERMINE EXTENT OF WORK IN EACH AREA, INCLUDING WHETHER DEVICES ARE TO REMAIN, BE REMOVED, REPLACED, ETC... EXCEPT AS NOTED, GENERALLY THE INTENT IS THAT IF EXISTING DEVICES ARE SHOWN ON THE EXISTING CONDITIONS PLANS AND NEW DEVICES ARE SHOWN ON THE NON-EXISTING PLANS THEN EXISTING DEVICES ARE TO BE REMOVED. IF EXISTING DEVICES ARE SHOWN ON BOTH THEN DEVICES ARE TO REMAIN.
3. ALL EXISTING ITEMS INTENDED FOR REMOVAL SHALL BE COMPLETELY REMOVED WITH ALL ASSOCIATED HARDWARE INCLUDING, BUT NOT LIMITED TO: CONDUIT, BOXES, WIRING, CABLES, HANGERS, ETC... BACK TO THE SOURCE OR FIRST ITEM TO REMAIN.
4. COORDINATE WITH MECHANICAL AND PLUMBING DRAWINGS FOR MECHANICAL AND PLUMBING EQUIPMENT TO BE REMOVED. REMOVE ALL ASSOCIATED CONDUIT, BOXES, WIRING, ETC...
5. CONDUIT IN GOOD CONDITION, PROPERLY LOCATED AND SIZED MAY BE REUSED WHERE APPLICABLE. UNLESS NOTED OTHERWISE.
6. IN AREAS OUT OF THE ARE OF RENOVATION, VERIFY THAT ELECTRICAL POWER AND SYSTEMS ARE NOT AFFECTED BY THE ALTERATIONS. PROVIDE ALL WORK AS REQUIRED TO MAINTAIN POWER AND PROPER OPERATION OF ALL SYSTEMS.
7. PROVIDE FINISHED BLANK PLATES ON ALL EXISTING WALL BOXES WHICH CANNOT BE REMOVED.



1 EXISTING CONDITIONS AND DEMOLITION PART PLAN  
 SCALE: 1/4" = 1'-0"  
 0 2' 4' 6'